

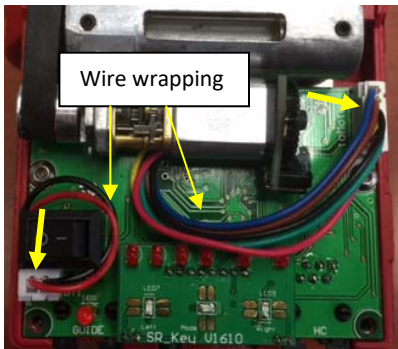
## iPolar Installation –SkyGuider Pro (#3339R-SGP)

Tool needed: a set of metric hex key wrench

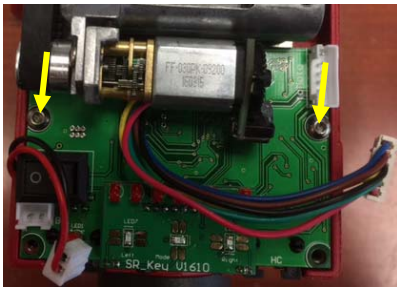
1. Loosen two screws at the front of the mount and two others on the top of a SkyGuider Pro main board cover and remove the black cover.



2. Unplug the 6-wire motor driver cable and DC power cable. Remember how wires wrapped.



3. Remove two mounting screws.



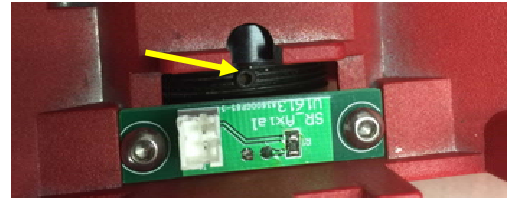
4. Gently pull the circuit board with sockets end up and slide the circuit board out.



5. Disconnect the polar scope LED cable.



6. Rotate the RA axis to find two set screws next to the LED board, which are used to secure the polar scope in place. Use a hex key to release the set screws. Pull the polar scope out of the RA axle.



7. Remove polar scope cover and base.



8. Remove the polar scope out of the RA axis.



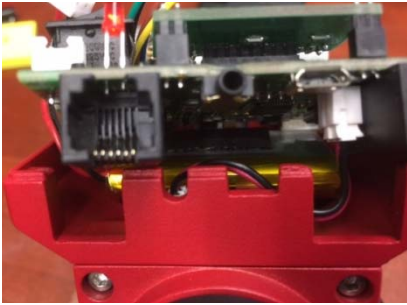
9. Insert the iPolar into the RA axis. Lock the set screw gently to secure the iPolar.



10. Replace the Polar Scope base plate with a new one with larger opening.



11. You can remove the LED board and cable since it is not needed for iPolar. Sliding the front end of the control board in.



12. Gently push the board in when the power cable goes through the small cut on the board.



13. When securing the board with two screws, make sure that the battery and wires underneath are properly seated. Fully tighten the screws.
14. Put the cover and screws on. Refer to step 2 to wrap the wire properly.
15. If you have difficulty to remove the board from the mount, you may remove the motor from the motor assembly to have more accessing spaces. Contact iOptron support team for an instruction.
16. Follow iPolar Operation Manual to perform the polar alignment. **You may slightly release the RA clutch disk to rotating the SkyGuider Pro RA axis during 3-point camera center calibration.**